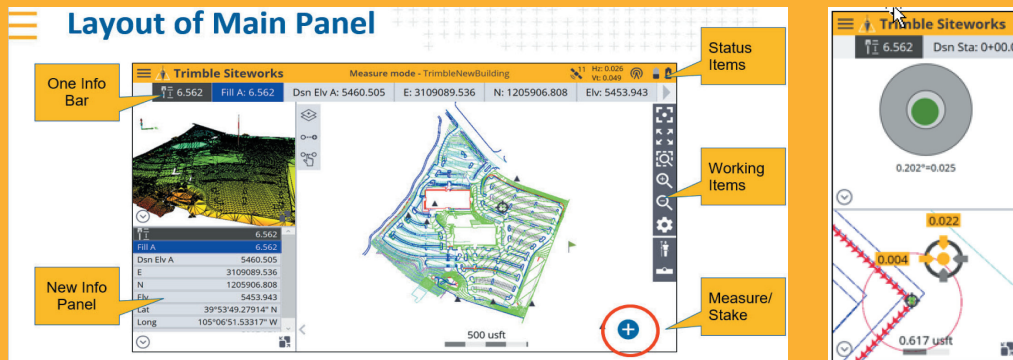


# TRIMBLE SITEWORKS

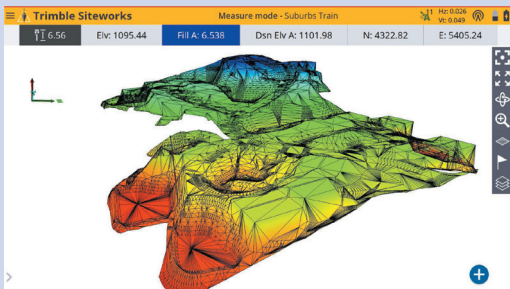
An in-class training led by instructors using Trimble Virtual World to allow hands on usage without weather constraints. Each person will be using the rover and collector as they would in the field, Measuring, Staking, Calibrating, etc.



**Cost of the class is \$650.00 per person**

You must register in advance on-line at: [www.sitechnortheast.com/events](http://www.sitechnortheast.com/events).

This one day class will begin at 8:00 sharp and will go to 3:00. Lunch will be provided. All gear will be provided by SITECH Northeast. We have a limit of 8 people in the class.



### Topics included but not limited to:

- Open project (project, work order, design)
- Connecting your receiver (base, rover)
- Calibrating ebubble
- Checking into control
- Turning on tilt compensation
- Staking out a line (line settings, etc.)
- Measure mode (measuring point, line)
- CoGo some of the most used features
- Data management
- File extensions
- Asbuilt coding
- Infield Design

This Class is in-person at the Milton CAT location posted. The limit will be 8 people. Please go on-line to register for each session.

[www.sitechnortheast.com/events](http://www.sitechnortheast.com/events)

Questions/Additional information? Contact: [Sitechtraining@sitechnortheast.com](mailto:Sitechtraining@sitechnortheast.com)



**SITECH NORTHEAST**  
[www.sitechnortheast.com](http://www.sitechnortheast.com)

- Videos
- Product specifications
- Applications
- Easy to understand technology breakdowns
- Customer testimonials

